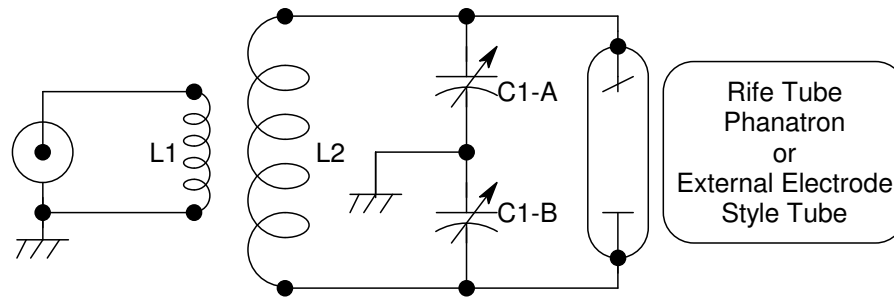


RF Amplifier to Rife Tube Matching Network

Copyright (c) 2011 by Ralph M. Hartwell II
V1.01 10 NOV 2011



NOTES:

- L1 - 4 turns #12 solid copper THHN insulated wire close-wound over the center of L2.
- L2 - 29 turns #10 solid copper THHN insulated wire close-wound on 4" ID PVC pipe. Form OD is 110 MM or 4.33"
- C1-A and C1-B - 150 pF per section. Approx. 63 pF required for tuning at 3.1 MHz.