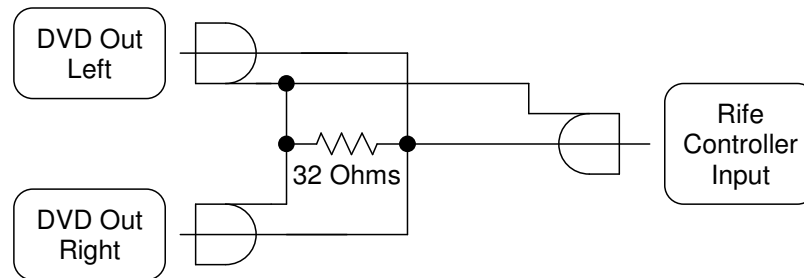


### Attenuator Cable

From Sony DVD Player to Rife Beam-Ray Controller

Copyright (c) 2011 by Ralph M. Hartwell II

V1.01 15 NOV 2011



#### NOTES:

- Adjust load resistor for approx. 0.5 V RMS at input to Rife Controller,
- Load resistor required to lower DVD player audio level and ensure a flat frequency response.